

PART OF THE NE. 1/4, OF SECTION 36, T.6N., R.2W., S.L.B. & M.

OGDEN COMMERCIAL & INDUSTRIAL PARK PLAT A FIRST AMENDMENT

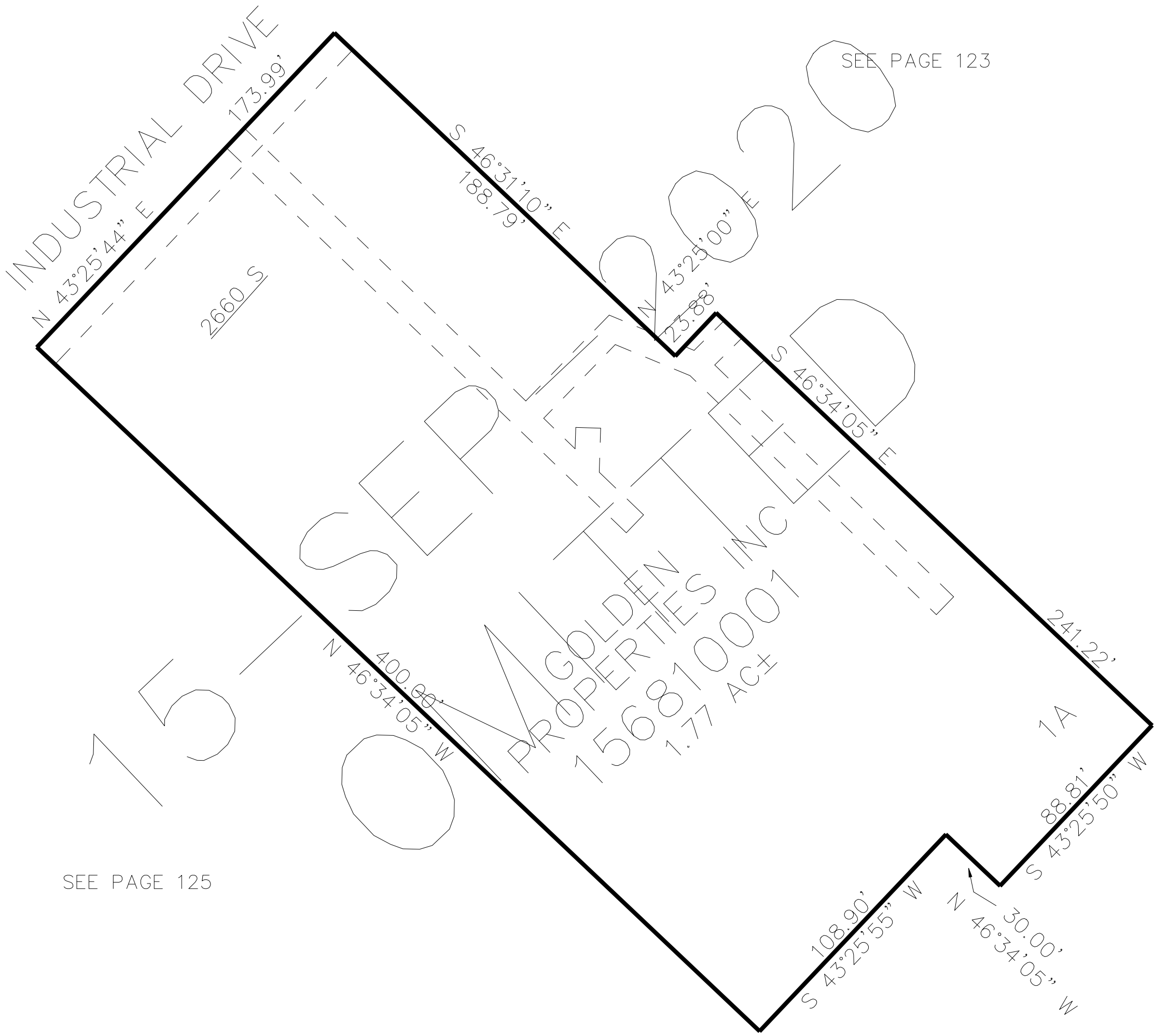
681

TAXING UNIT: 25

IN OGDEN CITY
SCALE 1" = 40'

SEE PAGE 124

SEE PAGE 123



SEE PAGE 125

SEE PAGE 125

10' UTILITY & DRAINAGE EASEMENTS EACH
SIDE OF PROPERTY LINES AS INDICATED
BY DASHED LINES EXCEPT AS OTHERWISE
SHOWN.

FOR COMPLETE ENG DATA SEE
ORIGINAL DEDICATION PLAT IN
BOOK 84, PAGE 95 OF RECORDS.